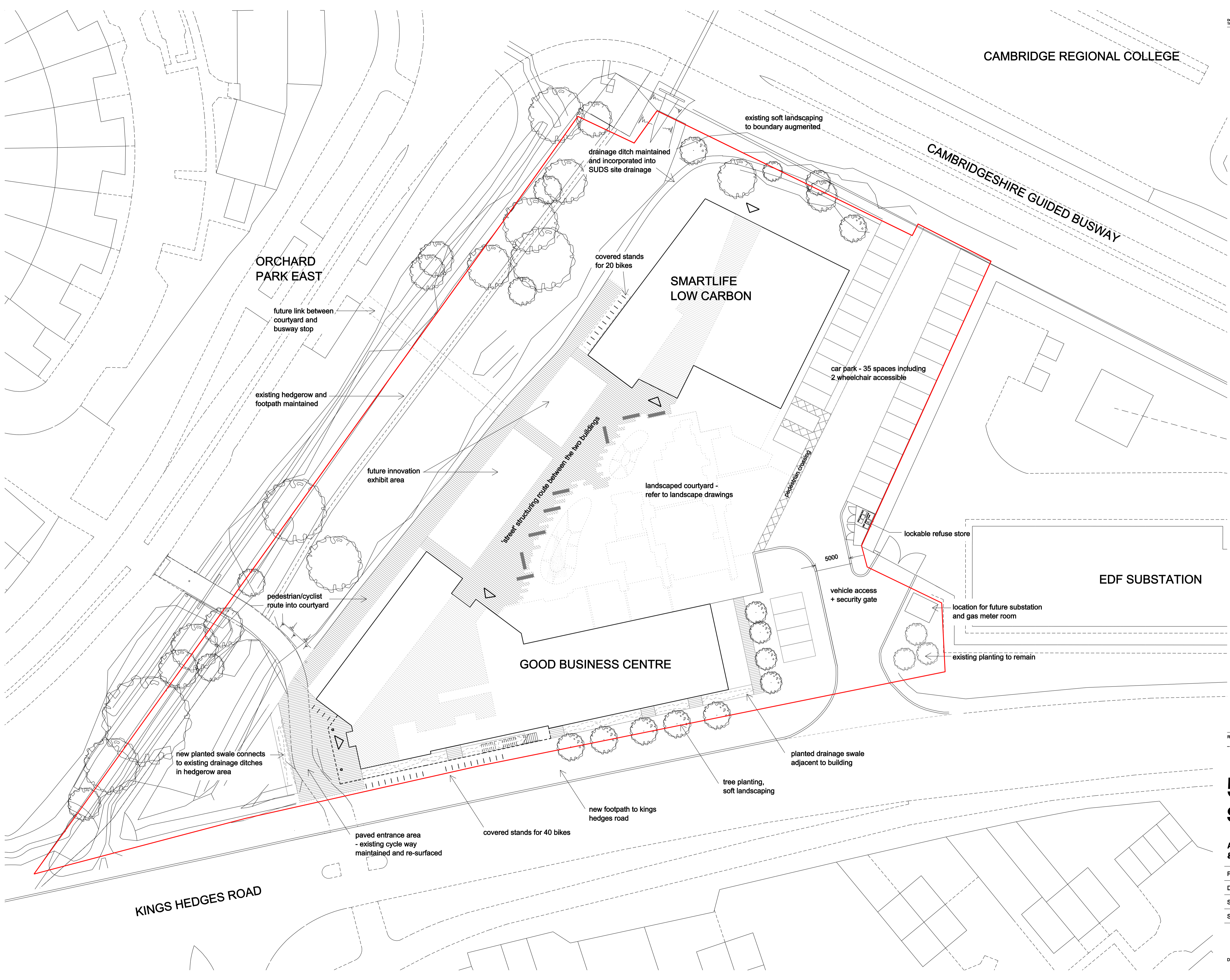


DO NOT SCALE FROM THIS DRAWING. CONTRACTOR TO CHECK ALL BUILDING AND SITE DIMENSIONS. THIS DRAWING IS TO BE READ IN CONJUNCTION WITH ENGINEERS AND OTHER SPECIALISTS DRAWINGS.



CAMBRIDGE REGIONAL COLLEGE

CAMBRIDGESHIRE GUIDED BUSWAY

ORCHARD PARK EAST

SMARTLIFE LOW CARBON

GOOD BUSINESS CENTRE

EDF SUBSTATION

KINGS HEDGES ROAD

- HIVE site boundary
- ▷ Building entrances

future link between courtyard and busway stop

existing hedgerow and footpath maintained

future innovation exhibit area

pedestrian/cyclist route into courtyard

new planted swale connects to existing drainage ditches in hedgerow area

paved entrance area - existing cycle way maintained and re-surfaced

drainage ditch maintained and incorporated into SUDS site drainage

covered stands for 20 bikes

street structuring route between the two buildings

landscaped courtyard - refer to landscape drawings

new footpath to kings hedges road

covered stands for 40 bikes

existing soft landscaping to boundary augmented

5000

vehicle access + security gate

tree planting, soft landscaping

car park - 35 spaces including 2 wheelchair accessible

lockable refuse store

location for future substation and gas meter room

existing planting to remain

REV	DATE	NOTES
1	4/6/10	smartlife low carbon planning submission

5th studio

Architecture & Urbanism

mail@5thstudio.co.uk
www.5thstudio.co.uk

Darkroom
Geydir Street
Cambridge CB1 2LJ
+44 (0)1223 516009

Unit 14
21 Wren Street
London WC1X 0DF
+44 (0)20 7537 7221

5th Studio is a Limited Company
Registered in England
Company No. 307520
VAT No. 771 206 482
5th Studio is a 50th Chartered Practice

Project:	The Hive
Drawing Title:	Masterplan Site Layout
Scale:	1:250@A1
Status:	FOR PLANNING

Drwg No: **HIVE.040**
© 5th Studio Ltd.